

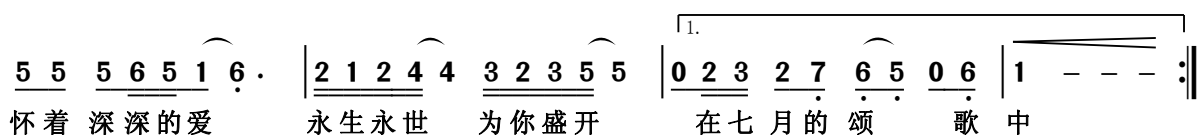
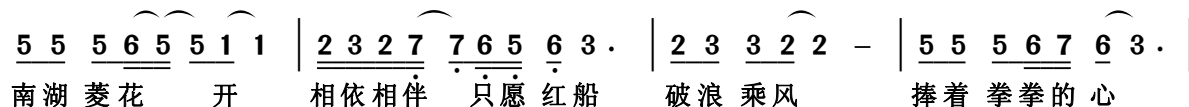
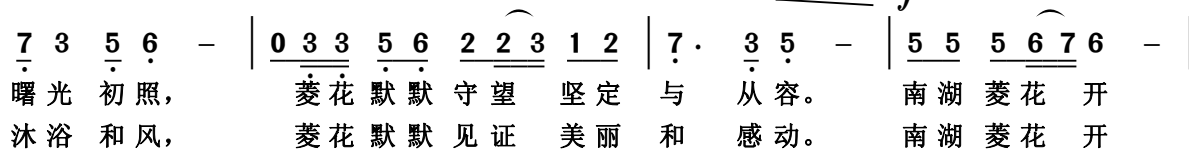
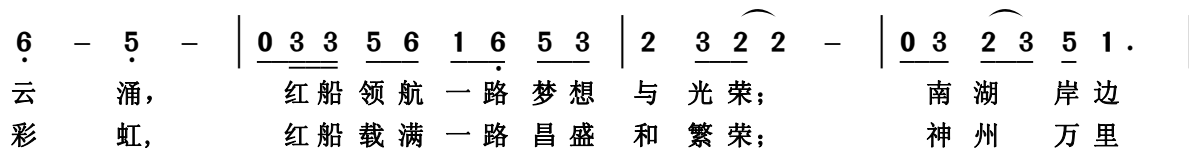
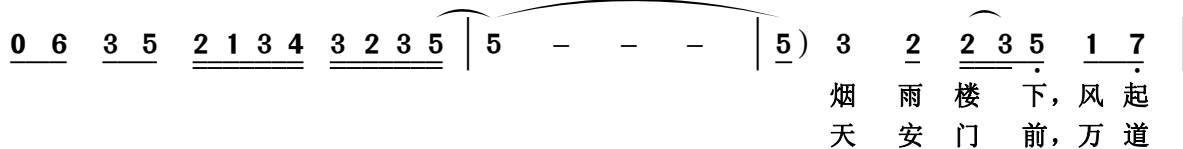
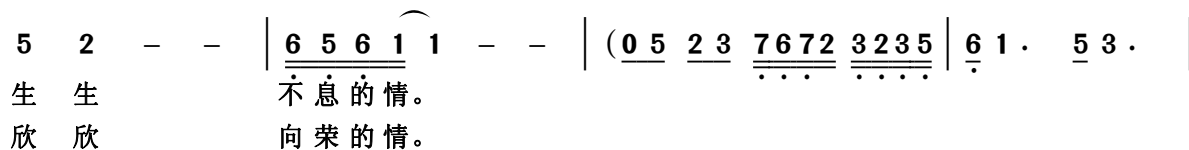
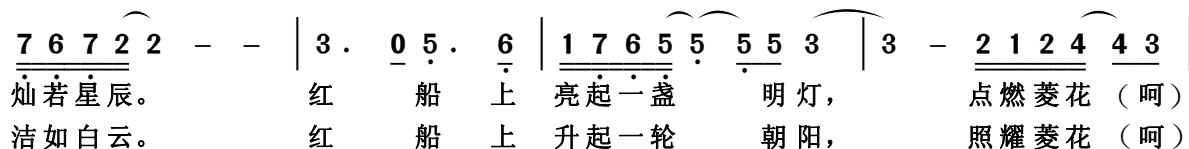
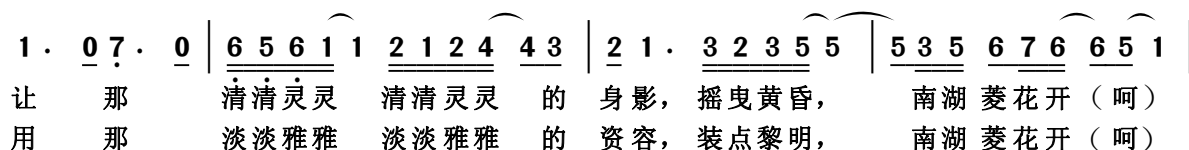
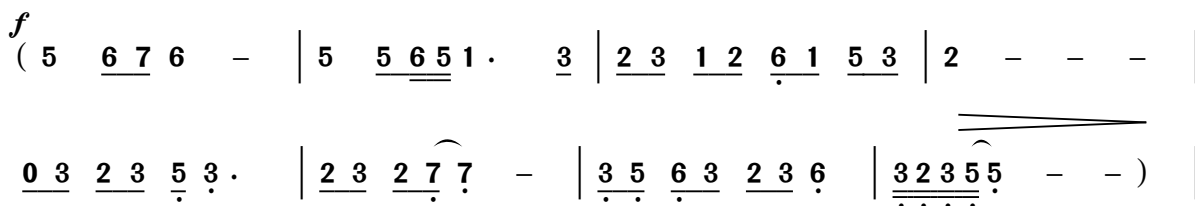
南湖菱花开

女声独唱

1=^bE (或G) $\frac{4}{4}$

汤昭智 蔚 鹤 词
蔚 鹤 曲

$\text{♩}=72$ 深情地



慢下来 回原速

(0 6 3 5 2 1 2 4 3 2 3 5 | 5 - - - | 1 - - -)

0 6 7 6 6 4 3 | 5 - - - | 5 - - - | 5 0 0 0 ||

在七月的颂歌
 中